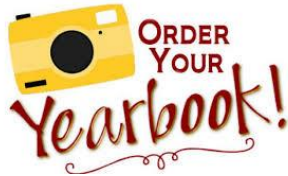


**The USDA Recently announced they are extending the Free Meal Program through the end of the 2021-2022 School Year. If you have any questions, please contact the Food and Nutrition Department**

# Yearbooks on Sale!

The 2021-2022 PFA Yearbook will be here this month! It's not too late to get your copy! The cost is \$40. You can reserve one with Ms. Young in the front office by paying cash, check, or charge. Grab your copy of this year's memories while you can!



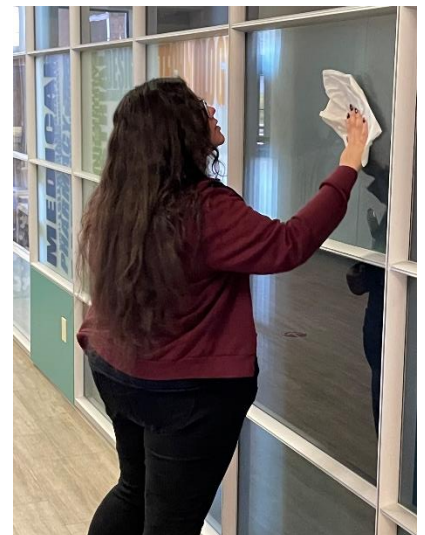
## Counselor Connection

**Support Groups** will be continuing through Term 4. If you feel your child could benefit from taking part, please contact Mr. Barrett at [vbarrett@pusd11.net](mailto:vbarrett@pusd11.net), Mrs. Deeg at [ideeg@pusd11.net](mailto:ideeg@pusd11.net) or Mrs. Ross at [aross@pusd11.net](mailto:aross@pusd11.net)

Do you or your child need to make an appointment with Mrs. Deeg? You can do so by clicking on the link below:

<https://outlook.office365.com/owa/calendar/MrsDeeg@pusd11net.onmicrosoft.com/bookings/>

Wednesday, April 27<sup>th</sup> was PFA's Give Back Day. Staff and students cleaned up the area around and inside Old Main and helped at Peoria Elementary's Field Day. This resulted in a total of 110 volunteer hours. We're so proud of our PFA Family and all the good that they do!





## From the Front Office:

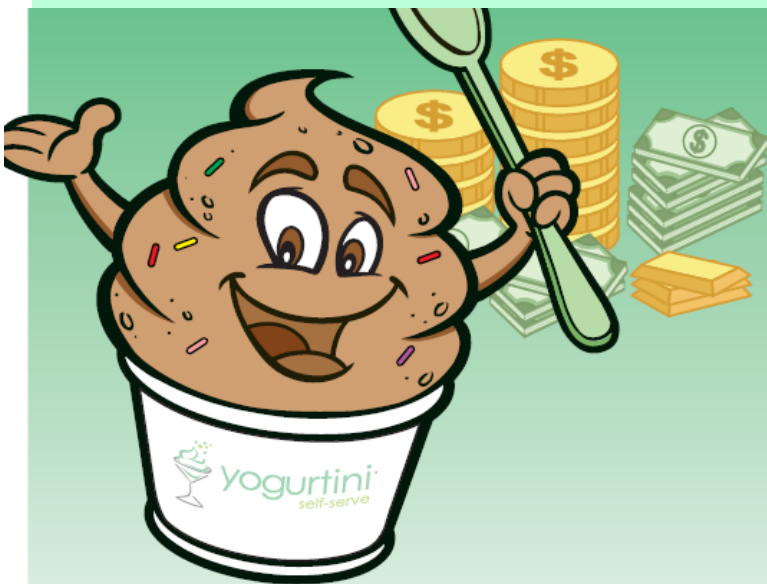
Thursday, May 19th is the end of the Term 4/Semester 2. Report cards will be available for viewing on ParentVue starting May 19<sup>th</sup>. Paper copies will no longer be sent home. If you are not signed up for ParentVue, please see someone in the front office to get your activation code. (Photo ID is required.)

When your child is absent from school, please make sure to call our attendance line, 623-412-5481, so they will not be marked with an unverified absence. Per state law, we are unable to change attendance codes after 24 hours.

If you have moved recently, or changed your phone number, please stop by the front office so those changes can be made to your child's information.

If your student owes class fees for this term, please pay them as soon as possible. The money is used for classroom supplies. If you are not sure if you owe, please contact the school office and we will be happy to look that up for you, or email Ms. Young at [myoung@pusd11.net](mailto:myoung@pusd11.net)

Please consider attending the Hart Pantry fundraiser below. They have helped PFA and our students for many years with food bags, toiletries, bicycles, school clothes shopping trips and so much more! They are an invaluable asset not only to our school, but to this community.



# Enjoy Yogurt. Feed a Cause.

We are hosting a fundraiser for

## Hart Pantry

So stop by, enjoy a yummy frozen yogurt and a smile because you are helping a great cause!

**Wednesday, May 4th • 5 to 8pm**

On the northeast corner of 59th Ave. & W. Thunderbird Rd.  
**Be sure to mention the fundraiser when checking out.**



# May 2022



1	2	3	4	5	6	7
			Teacher Appreciation Week			
			#MW SCHED	Blood Drive!		
8	9	10	11	12	13	14
		Senior finals during regularly scheduled classes		Mandatory Graduation Rehearsal 8:30-11:30	3pm grads report 4pm graduation	
		daily sched	#MW SCHED		graduation	
15	16	17	18	19	20	21
			finals	finals	<del>school</del>	
22	23	24	25	26	27	28
29	30	31				

## Daily Schedule

Mon, Tues, Thurs, Fri

1 <sup>st</sup> HOUR (80 min)	7:30	8:50
2 <sup>nd</sup> HOUR (80 min)	8:55	10:15
3 <sup>rd</sup> HOUR (80min)	10:20	11:40
PFA LUNCH (30 min)	11:40	12:10
5 <sup>th</sup> HOUR (90 min)	12:15	1:45
busses leave		1:50
RTI (30 min)	1:50	2:20
6 <sup>th</sup> HOUR (120 min)	2:30	4:30

## #Modified Wednesday

Early Release

1 <sup>st</sup> HOUR (54 min)	7:30	8:24
2 <sup>nd</sup> HOUR (52 min)	8:29	9:21
3 <sup>rd</sup> HOUR (52 min)	9:26	10:18
5 <sup>th</sup> HOUR (52 min)	10:23	11:15
PFA lunch (30 min)	11:15	11:45
busses leave		11:45
3 <sup>rd</sup> HOUR advisory (30 min)	11:50	12:20
6 <sup>th</sup> HOUR does not convene on Modified Wednesdays		

## 10:20 Final Exams

5/18,19/22

1 <sup>st</sup> Class (87 min)	7:30	8:47
2 <sup>nd</sup> Class (87 min)	8:53	10:20
busses leave		9:50
6 <sup>th</sup> HOUR does not convene		

## Graduation Day

5/13/22

1 <sup>st</sup> HR (41 min)	7:30	8:11
2 <sup>nd</sup> HR (38 min)	8:16	8:54
3 <sup>rd</sup> HR (38 min)	8:59	9:37
5 <sup>th</sup> HR (38 min)	9:42	10:20
busses leave		10:06
6 <sup>th</sup> HR does not convene		

school	bus	morning leave	midday bus	bus	MW	Daily leave	arrival
Cactus	250	7:05		125			2:06
Centennial	71	7:11		130			2:00
Ironwood	73	7:08		73			2:04
Kellis	133	7:12		28			2:07
Liberty	145	6:58		27			2:12
Sunrise Mtn	145	7:05		258			2:10

## PFA Shuttle Bus Times



# School Year Calendar | 2021-22



July/August

S	M	T	W	T	F	S
25	26	27	28	29	30	31
1	2	3	4*	5	6	7
8	9	10	11	12	13	14
15	16	17	18	19	20	21
22	23	24	25	26	27	28
29	30	31				

November

S	M	T	W	T	F	S
	1	2	3	4	5	6
7	8	9	10	11	12	13
14	15	16	17 <sup>T</sup>	18	19	20
21	22	23	24	25	26	27
28	29	30				

February

S	M	T	W	T	F	S
		1	2	3	4	5
6	7	8	9	10	11	12
13	14	15	16	17	18	19
20	21	22	23	24	25	26
27	28					

May

S	M	T	W	T	F	S
1	2	3	4	5	6	7
8	9	10	11	12	13	14
15	16	17	18 <sub>F</sub>	19 <sub>F</sub>	20	21
22	23	24	25	26	27	28
29	30	31				

September

S	M	T	W	T	F	S
			1	2	3	4
5	6	7	8	9	10	11
12	13	14	15	16	17	18
19	20	21	22	23	24	25
26	27	28	29	30		

December

S	M	T	W	T	F	S
			1	2	3	4
5	6	7	8	9	10	11
12	13	14	15 <sub>F</sub>	16 <sub>F</sub>	17	18
19	20	21	22	23	24	25
26	27	28	29	30	31	

March

S	M	T	W	T	F	S
		1	2	3	4	5
6	7	8	9	10	11	12
13	14	15	16	17	18	19
20	21	22	23	24	25	26
27	28	29	30	31		

June

S	M	T	W	T	F	S
			1	2	3	4
5	6	7	8	9	10	11
12	13	14	15	16	17	18
19	20	21	22	23	24	25
26	27	28	29	30		

October

S	M	T	W	T	F	S
					1	2
3	4	5	6	7	8	9
10	11	12	13	14	15	16
17	18	19	20	21	22	23
24	25	26	27	28	29	30
31						

January

S	M	T	W	T	F	S
						1
2	3	4	5	6	7	8
9	10	11	12	13	14	15
16	17	18	19	20	21	22
23	24	25	26	27	28	29
30	31					

April

S	M	T	W	T	F	S
					1	2
3	4	5	6	7	8	9
10	11	12	13	14	15	16
17	18	19	20	21	22	23
24	25	26	27	28	29	30

July

S	M	T	W	T	F	S
					1	2
3	4	5	6	7	8	9
10	11	12	13	14	15	16
17	18	19	20	21	22	23
24	25	26	27	28	29	30
31						

## Federal Holiday | No School

Sept. 6	Labor Day
Oct. 11	Columbus Day
Indigenous People's Day (Observed)	
Nov. 11	Veterans Day
Nov. 25	Thanksgiving Day
Dec. 25	Christmas
Jan. 1	New Year's Day
Jan. 17	ML King, Jr. Day
Feb. 21	Presidents' Day
April 22	April Break
May 30	Memorial Day
July 4	Independence Day

## Instructional Days

First Semester	89 days
Second Semester	91 days
Total	180 days

## Modified Wednesday\*

- 8:00 Elem. schools dismiss at 1:00
- 8:40 Elem. schools dismiss at 1:40
- High schools dismiss at 12:20
- \*Aug. 4 is a full-day for all campuses

## Early Release

- 8:00 Elem. schools dismiss at 11:00
- 8:40 Elem. schools dismiss at 11:40
- High schools dismiss at 10:20
- <sup>T</sup> Nov. 17 is early release for H.S. only

## Parent Teacher Conferences

- 8 Elem. schools dismiss at 11
- 8:40 Elem. schools dismiss at 11:40

## Key

	Federal Holiday- No School
	Modified Wednesday
	Teacher Workday- No School
	First Day of Semester
	Last Day of Semester   Early Release
	Parent Teacher Conf.   Early Release
	Last Day of School for Seniors
F	H.S. Finals   10:20 Release

Approved 10/12/17

Ratified 11/12/20

Calendars are subject to change